

INFORMATION PACK

FOR

PENTHOUSE

NEWLY RENOVATED / MAGNIFICENT VIEWS

CONSTANTIA PARK

701 STANTIAZICHT, 218 LANGENHOVEN STREET, CONSTANTIA PARK, PTA



ON SITE AUCTION – Wednesday, 5 April @ 11h00
Pieter 084 8800 165 | pieter@bideasy.co.za
www.bideasy.co.za

Property Information

Title Deed Information –

| | |
|---|--|
| SS STANTIAZICHT (208/1986), UNIT 31, CONSTANTIA PARK, PRETORIA, GAUTENG - JR | |
| Known As: | 31 SS STANTIAZICHT, DOOR 701, 218 LANGENHOVEN STREET, CONSTANTIA PARK, PRETORIA, GAUTENG - JR |
| Title Deed: | ST68832/2017 |
| Extent: | 112m² |
| Local Authority: | CITY OF TSHWANE METROPOLITAN MUNICIPALITY |
| Registration Division: | JR |
| Province: | GAUTENG |
| VAT Status: | The seller is NOT registered for VAT |
| Zoning: | RESIDENTIAL |

Property Information

Large penthouse with beautiful views in the east of Pretoria, close to various schools, hospitals, shopping centers and main routes. The property is located in the established and sought-after Constantia Park suburb.

A rare property that has recently been beautifully renovated as the seller's **forever home**, but they have now emigrated. This property has all the extra finishes and features reserved for "build for self" projects – louver roof on the patio, modern kitchen and bathrooms with granite tops, floor to ceiling louver blinds, aluminum stack sliding doors, and much more.

The penthouse apartment is the only unit on the top floor, and the north views are spectacular. Entry to the apartment is via the large private patio which is incorporated into the apartment with wide folding doors that open up to the open plan interior. 3 living rooms and a stunning modern kitchen offer plenty of living and entertainment areas.

The apartment was a 3-bedroom apartment, but the owners decided to open up the 3rd bedroom into a library / study. The property can be converted back into a 3-bedroom apartment if required.

SECURITY FEATURES - Access controlled entry and exit point into the building, as well as guardhouse facilities at the 6th floor. This property is secure, private, and luxurious.

Property Details:

- 2 Bedrooms
- Dressing Room in Main Bedroom
- 2 Bathrooms (m-e-s)
- Lounge
- Dining Room
- Library / Study (Original 3rd Bedroom)
- Kitchen
- Scullery
- Laundry Closet
- Patio
- 2 Lock up Garages (One doubles up as secure storage facility with lockable cage)

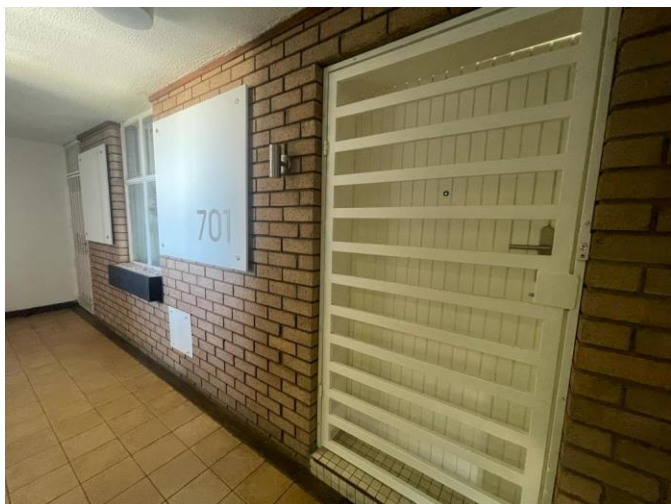
Rates & Taxes ± R720.00 p/m

Levies ± R4235.84 p/m

The View

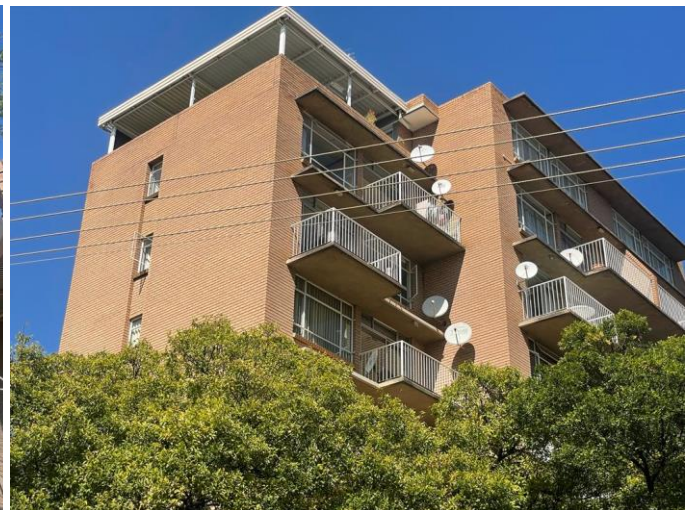


Photo's

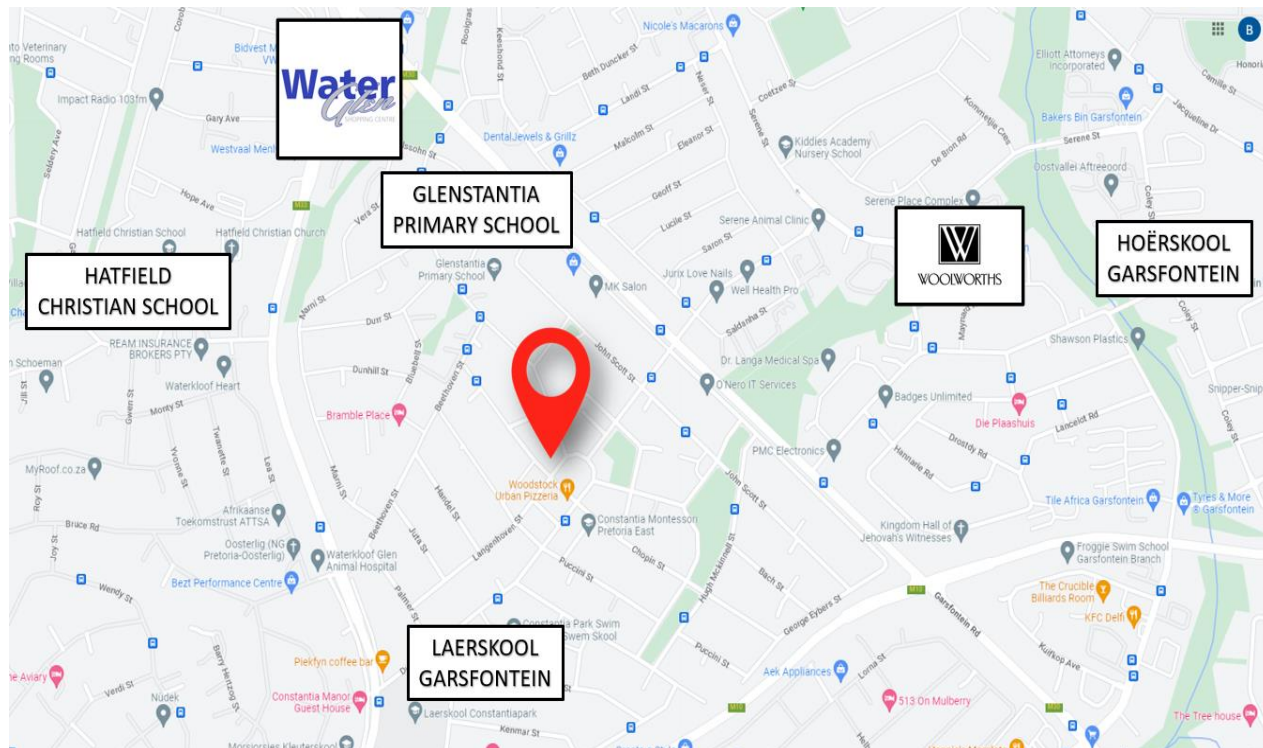








Map



GPS Co-Ordinates 25°48'05.9"S 28°17'11.1"E
-25.801647, 28.286413

Aerial



Terms & Conditions

Bidders need to FICA when registering to bid with Copy of ID and Proof of Residence.

5% Deposit payable on the fall of the hammer.

10% Commission, + VAT on Commission, payable on the fall of the hammer.

45 Days for Guarantees.

7 Days Confirmation Period.

For more information, or to pre-register for the auction, please contact:

Pieter Nel

084 8800 165

pieter@bideasy.co.za

Disclaimer

Whilst all reasonable care has been taken to provide accurate information, neither BidEasy Auctions, nor the Seller/s guarantee the correctness of the information, provided herein and neither will be held liable for any direct or indirect damages or loss, of whatsoever nature, suffered by any person as a result of errors or omissions in the information provided, whether due to the negligence or otherwise of BidEasy Auctions or the Sellers or any other person. The Consumer Protection Regulations as well as the Rules of Auction and Conditions of Sale can be viewed at www.bideasy.co.za or at 105 Dely Rd, Ashlea Gardens, Pretoria, 0081.

The Rules of Auction and Conditions of Sale/ Deed of Sale contain the registration requirements if you intend to bid on behalf of another person or an entity. The above lots are all subject to a reserve price and the sale by auction is subject to a right to bid by or on behalf of the owner or auctioneer. All Terms & Conditions apply. BidEasy reserves right to remove / add assets / lots without notice before or on auction day.