

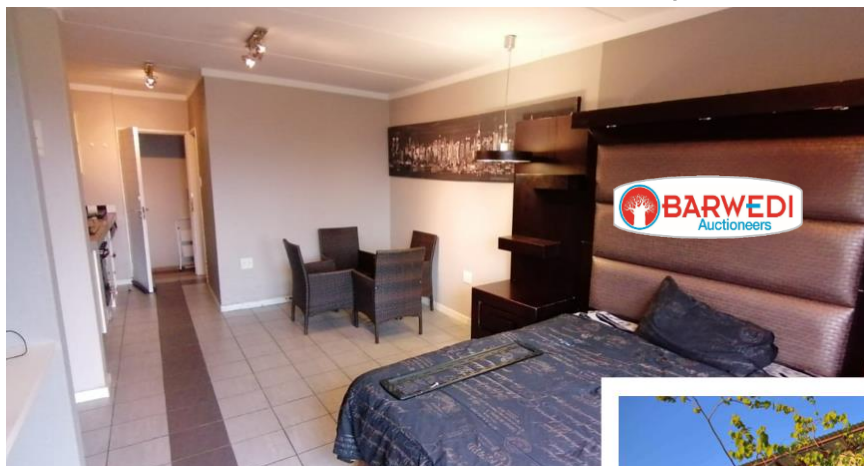
INFORMATION PACK

FOR

****ESTATE LATE****

THE PADDOCKS - FOURWAYS BACHELORS UNIT

147 THE PADDOCKS DAINFERN, BROADACRES DR, FOURWAYS



ON SITE AUCTION – Tuesday, 9 March 2021 @ 14h30

Dehan Engelbrecht – 073 154 1745

dehan@bideasy.co.za / www.bideasy.co.za





BARWEDI

Auctioneers

In Association with
BidEasy
Auctioneers

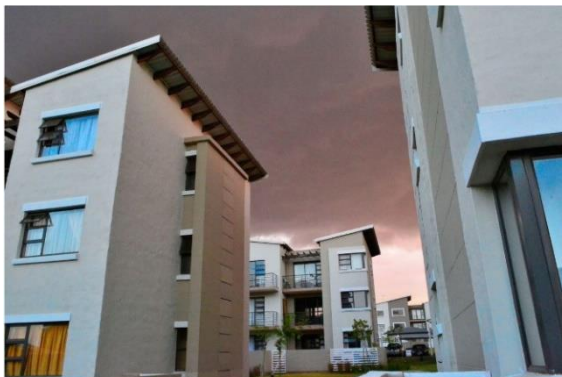
the paddocks

D A I N F E R N

The Paddocks is located within the beautiful and well-kept estate near Fourways in Dainfern, which gives you quick access on to the R551 (William Nicol Dr).

The estate features a clubhouse with a tennis court and swimming pool also includes walking trails within the estate. This is your opportunity to not only to make a savvy financial investment, but also invest in your lifestyle.

See more Info: <http://thepaddocks.whitfields.co.za>



Title Deed Information

SS THE PADDOCKS (160/2013), UNIT 147, FOURWAYS EXT 59, GAUTENG – JR
Known As: 147 THE PADDOCKS DAINFERN, BROADACRES DR, DAINFERN RIDGE, FOURWAYS
Title Deed: ST30335/2019
Extent: 32.0000SQM
Local Authority: CITY OF JOHANNESBURG
Registration Division: JR
Province: GAUTENG
Masters Reference: 013479/2020 – SOUTH GAUTENG HIGH COURT
Registered Owner: EMMANUEL MUKHONDO
VAT Status: The seller is NOT Registered for VAT
Zoning: RESIDENTIAL

Property Information

Modern Bachelor apartment situated in the beautiful estate of the Paddocks - Fourways.

The complex offers a secure, lifestyle with abundant open park spaces children's play areas, onsite laundry facilities. With direct access to the Dainfern Square Shopping Centre, which is home to a Virgin Active Gym, Woolworths, Pick n Pay and a selection of restaurants.

This 1-bedroom apartment is an open plan unit it consists of a kitchen, lounge, and bedroom area. Built-in cupboards and a study desk already installed.

Property Details:

- Bedroom
- Bathroom
- Lounge
- Kitchen
- Balcony
- Covered Parking

Rates & Taxes ± R 420.00

Levies ± R1 485.60

Aerial View



Photos





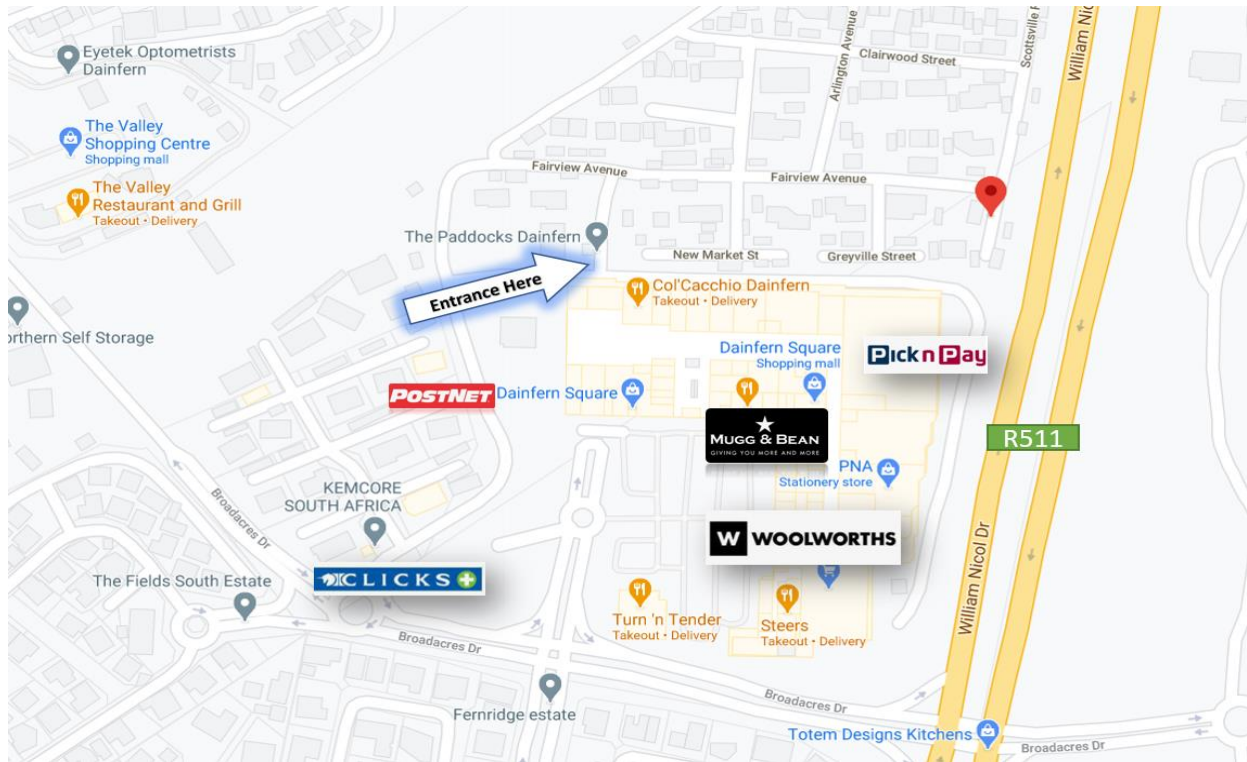
BARWEDI

Auctioneers

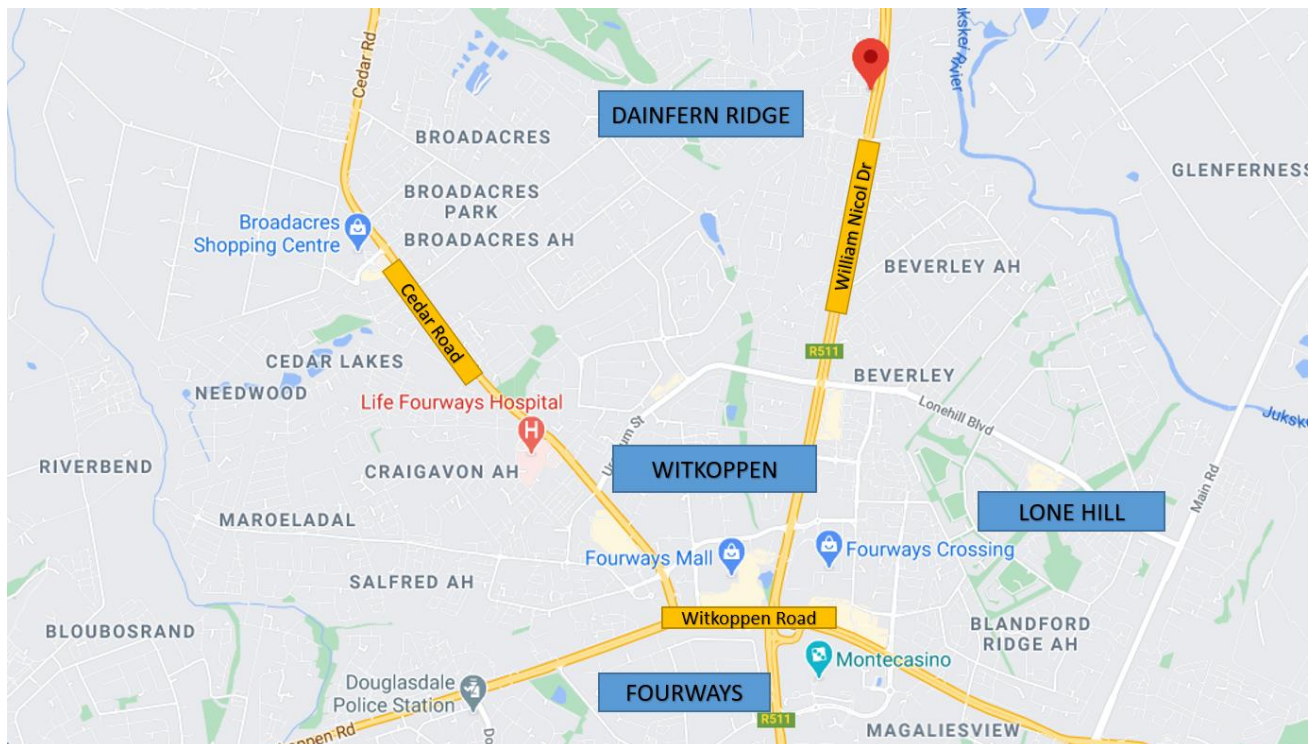
In Association with



Map



GPS Co-Ordinates 25°59'31.2"S 28°00'54.0"E
-25.992000, 28.015000



Terms & Conditions

Bidders need to FICA when registering to bid with Copy of ID and Proof of Residence.

5% Deposit payable on the fall of the hammer.

6% Commission, payable on the fall of the hammer.

45 Days for Guarantees.

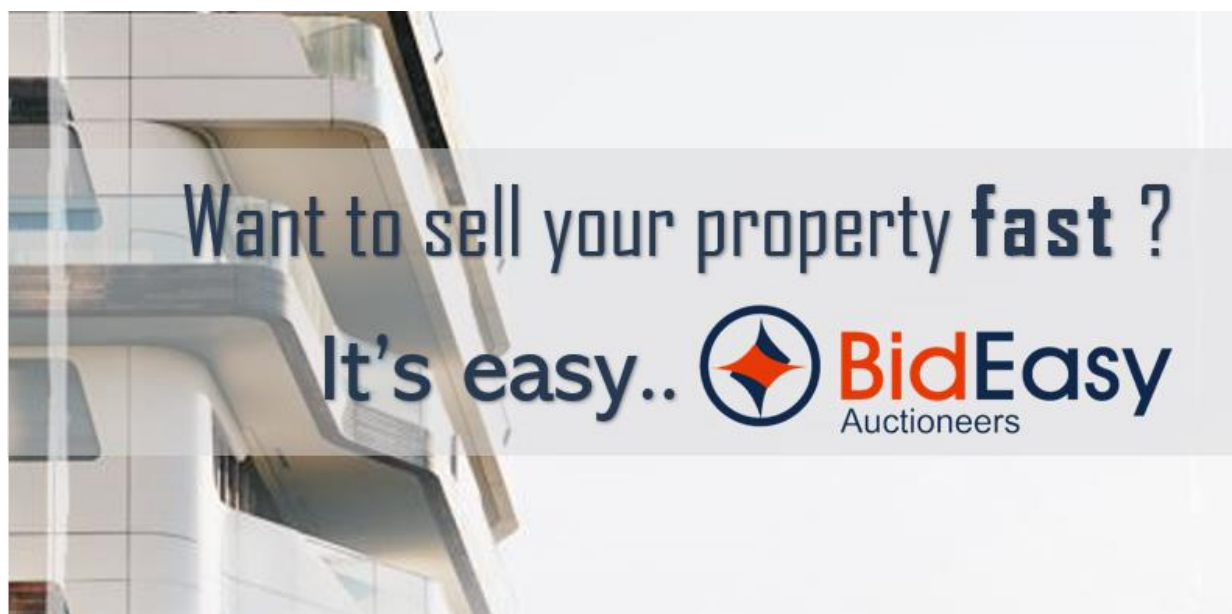
7 Days Confirmation Period.

For more information or to pre-register, please contact:

Dehan Engelbrecht

073 154 1745

dehan@bideasy.co.za



Disclaimer

Whilst all reasonable care has been taken to provide accurate information, neither Barwedi Auctions, nor the Seller/s guarantee the correctness of the information, provided herein and neither will be held liable for any direct or indirect damages or loss, of whatsoever nature, suffered by any person as a result of errors or omissions in the information provided, whether due to the negligence or otherwise of Barwedi Auctions or the Sellers or any other person. The Consumer Protection Regulations as well as the Rules of Auction and Conditions of Sale can be viewed at www.bideasy.co.za or at 105 Dely Rd, Ashlea Gardens, Pretoria, 0081.

The Rules of Auction and Conditions of Sale/ Deed of Sale contain the registration requirements if you intend to bid on behalf of another person or an entity. The above lots are all subject to a reserve price and the sale by auction is subject to a right to bid by or on behalf of the owner or auctioneer. All Terms & Conditions apply. Barwedi reserves right to remove / add assets / lots without notice before or on auction day.

